



ROSSINI LEATHER COLLECTION BOOK

INDEX

GENERAL CHARACTERISTIC	pag. 01
LEATHER CHARACTERISTICS	pag. 03
LEATHER PRODUCTION PROCESS	pag. 04
ROSSINI LEATHER COLLECTION	pag. 06
Cat. 25 LEATHER MELLOW	pag. 08
Cat. 38 LEATHER ARCOBALENO	pag. 10
CAT 38 LEATHER NATURE	pag. 12
CAT 40 SETA	pag. 14
CAT 40 LEATHER MAYA	pag. 16
CAT 40 LEATHER MOSS	pag. 18
CAT 40 LEATHER VINTAGE	pag. 20
CAT45 LEATHER CASHMERE	pag. 22
CAT 45 LEATHER OXFORD	pag. 24
CAT. 55 BELLA VITA	pag. 26
CAT. 65 NABUCK	pag. 28
CAT.65 AMLETO	pag. 30
SUGGESTIONS FOR USE AND MAINTENANCE	pag. 32
HIGH AND MEDIUM PROTECTED LEATHERS (CAT 25, 38, 40)	pag. 32
LOW PROTECTED LEATHERS, GRADE 40,45, 55 ,65	pag. 33

GENERAL CHARACTERISTIC



Leather is a natural product therefore signs and imperfection on its surface such as wrinkles, veins, scars, scratches and shade variations are visible on the same hide while being manufactured and do not have to be considered as “defects “ or in any way detrimental to overall appearance, but natural characteristics that enhance the beauty of real leather and it differs from synthetic or artificial products.

UPHOLSTERY LEATHERS

Upholstery leathers are sourced from larger hides and the average size is 3.80-5.60 sqm(40-60 SqFt)

The main features and benefits of the article are the soft to touch sensation whilst maintaining its integrity and shape.



Example of visible shade variations for leathers Cat.40,45,55,65

Wrinkles, veins, scars, scratches and shade variations are visible on the same hide while being manufactured and do not have to be considered as “defects”, or in any way detrimental to overall appearance, but natural characteristics.



Colour variation



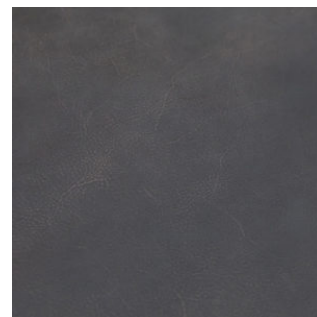
Grain difference



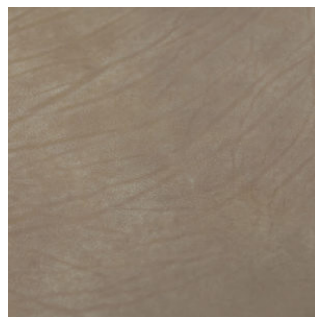
Low grain in the same hide



Closed scar



Veining

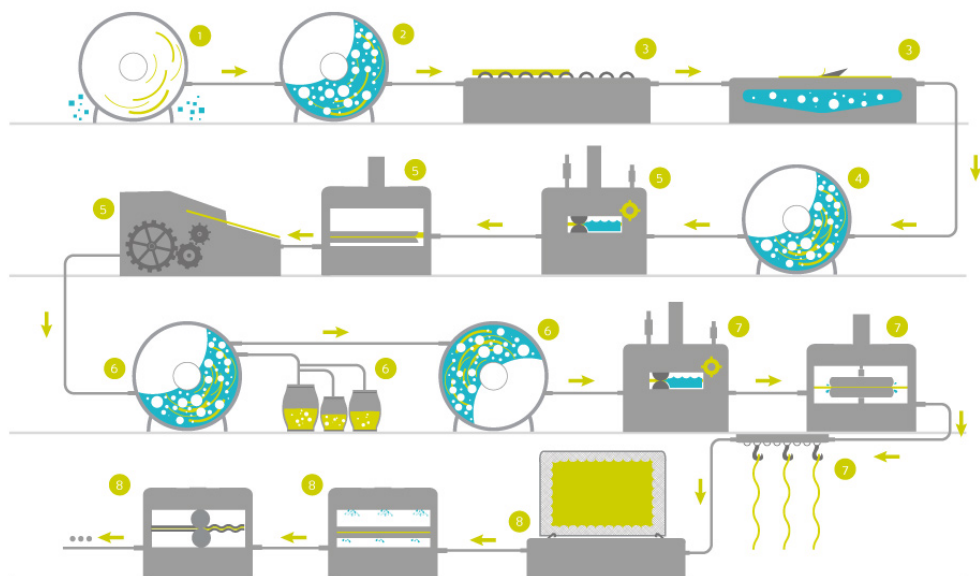


Wrinkle



Insect bites

LEATHER PRODUCTION PROCESS



LIMING

- 1. Preliminary operations** (mechanical shaking operation to remove salt)
- 2. Liming chemical** (soaking, un-hairing, liming)
- 3. Liming mechanical operations** (Fleshing operation, trimming and "splitting")

TANNING AND RE-TANNING

- 4. Tanning** (de-liming, maceration, pickle and tanning)
- 5. Mechanical operation in preparation for the re-tanning** (pressing, splitting and shaving)
- 6. Dyeing** (re-tanning, dyeing and fatliquoring operations)

DRYING AND FINISHING

- 7. Drying** (sammying machine, vacuum drying, air drying, toggle drying)
- 8. Finishing** (buffing, milling, finishing, printing)

ROSSINI LEATHER COLLECTION



At Rossini we have a wide range of leathers, from corrected top grain leather to full aniline divided as follows:

- High and Medium Protected Leather:

Category 25 - Mellow

Category 38 - Arcobaleno

Category 38 - Nature

Category 40 - Moss

- Low Protected Leather:

Category 40 - Maya

Category 40 - Classic

Category 45 - Cashmere

Category 45 - Oxford

Category 55 - Bella Vita

Category 65 - Amleto

Category 65 - Nabuck



DESCRIPTION

The category of leather coverings is further enriched with the MELLOW, also known with the name of “dollar printing”. Both denominations derive from the two main characteristics of this leather which make it a high-quality product especially as to the coverings of modern sofas characterised by clear and essential lines. The working process is further enriched with the particular “dollar print”, which creates the optical effect of an absolutely natural surface, typical of an heavy and tumbled leather.

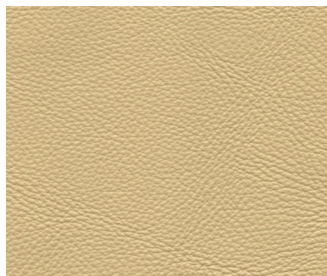
The manufacturing process of this leather, with the use of natural anilines and water fixings, allows us to obtain a soft and silky leather, really pleasant. The attention paid to the safeguarding of the environment is one of the most important condition, even in the production of this product.

CHARACTERISTICS

- Thickness: 1.3/1.5 mm
- Origin of raw material: Exotic selected cowhide
- Dyeing: Through dyed
- Finishing: Retouched printed grain

TECHNICAL DATA SHEET CAT 25 MELLOW

TEST	TEST METHOD	MINIMAL VALUE
Adhesion of finish	I.U.F 470-UNI EN ISO 11644	Min 2N/10
Elongation at break	I.U.P. 6 UNI EN ISO 3376	40-70%
Crack resistance	I.U.P. 20 – UNI EN ISO 5402	No crack 50000 cycles
Colour fastness to light	I.U.F. 402 UNI EN ISO 105-B02	>=5 72H-45°
Colour fastness to dry rubbing	I.U.F 450 UNI EN ISO 11640	>=4 500 cycles
Colour fastness to wet rubbing	I.U.F 450 UNI EN ISO 11640	>=3/4 250 cycles
Colour fastness to perspiration	I.U.F. 426 UNI EN ISO 11641	>=3/4 80 cycles
Tear strength	I.U.P. 8 UNI EN ISO 3377-1	>=20N
Tensile strength	I.U.P.6 – UNI EN ISO 3376	>=8N/mm2



DESCRIPTION

The item Arcobaleno has a great role in the category of high-quality coverings. The name itself expresses the main and fundamental characteristics of the leather: **NATURALNESS** and **SOFTNESS**.

With its thickness which varies from 1.3 to 1.5 mm and an accurate retanning process, rich in revitalizing components, **NATURAL** introduces itself with a very soft hand which gives a pleasant tactile feeling. Thanks to an accurate processing of the grain and to the use of selected ecological (or containing water) pigments, it is possible to obtain a leather with a very light and resistant protection layer, with a brilliant and natural aspect.

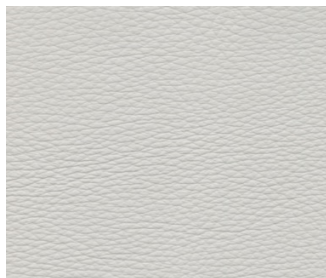
Its main characteristic which distinguishes it from almost all furniture leathers is the complete lack of mechanical printing processes: the natural grain on **NATURAL** derives from the manufacturing process to which it is submitted, typical of the full-thick leathers. This process is carried on in the full respect of the environment.

CHARACTERISTICS

- Thickness: 1.3/1.5mm
- Origin of raw material: Exotic selected cowhide
- Dyeing: Through dyed
- Finishing: Retouched natural grain

TECHNICAL DATA SHEET CAT 38 ARCOBALENO

TEST	TEST METHOD	MINIMAL VALUE
Colour fastness to rubbing dry	UNI EN ISO 11640	500 cycles > 4 Greyscale
Colour fastness to rubbing wet	UNI EN ISO 11640	250 cycles > ¾ Greyscale
Colour fastness to rubbing with alkaline perspiration	UNI EN ISO 11640	80 cycles > ¾ Greyscale
Light fastness	UNI EN ISO 105-B02	> 5 Bluescale
Tear strength	UNI EN ISO 3777-1	> 20 N
Finish adhesion	UNI EN ISO 11644	>2 N/Cm
Ph determination	UNI EN ISO 4045	Ph > 3.2
Flexing endurance	UNI EN ISO 5402-1	50000 cycles no damage
Flammability	UNI EN ISO 1021-1 :2006 UNI EN ISO 1021-2 :2006	Misfire



DESCRIPTION

The item NATURE has a great role in the category of high-quality coverings. The name itself expresses the main and fundamental characteristics of the leather: NATURALNESS and SOFTNESS.

With its thickness which varies from 1.6 to 1.8 mm and an accurate retanning process, rich in revitalizing components, NATURE introduces itself with a very soft hand which gives a pleasant tactile sensation. Thanks to an accurate processing of the grain and to the use of selected ecological (or containing water) pigments, it is possible to obtain a leather with a very light and resistant protection layer, with a brilliant and natural aspect.

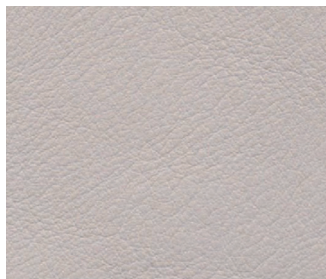
Its main characteristic which distinguishes it from almost all furniture leathers is the complete lack of mechanical printing processes: the natural grain on NATURE derives from the manufacturing process to which it is submitted, typical of the full-thick leathers. This process is carried on in the full respect of the environment.

CHARACTERISTICS

- Thickness: 1.6/1.8 mm
- Origin of raw material: Exotic selected cowhide
- Dyeing: Through dyed
- Finishing: Retouched natural grain

TECHNICAL DATA SHEET CAT 38 NATURE

TEST	TEST METHOD	MINIMAL VALUE
Adhesion of finish	I.U.F 470-UNI EN ISO 11644	Min 2N/10
Elongation at break	I.U.P. 6 UNI EN ISO 3376	40-70%
Crack resistance	I.U.P. 20 – UNI EN ISO 5402	No crack 50000 cycles
Colour fastness to light	I.U.F. 402 UNI EN ISO 105-B02	>=5 72H-45°
Colour fastness to dry rubbing	I.U.F 450 UNI EN ISO 11640	>=4 500 cycles
Colour fastness to wet rubbing	I.U.F 450 UNI EN ISO 11640	>=3/4 250 cycles
Colour fastness to perspiration	I.U.F. 426 UNI EN ISO 11641	>=3/4 80 cycles
Tear strength	I.U.P. 8 UNI EN ISO 3377-1	>=20N
Tensile strength	I.U.P.6 – UNI EN ISO 3376	>=8N/mm2



DESCRIPTION

Leather article SETA, has a great role in the category of the high-quality coverings. The name itself expresses an evergreen concept which makes this article unique.

The main characteristics of Seta leather article is the depth of shade, transparency and brightness. The hand is round with a silky touch. The small grain surface is obtained thanks to a special vacuum drying tanning process, that keeps the leather naturalness. This vacuum drying tanning process is mainly used in leather goods and leather garments sectors, in order to give the leather a fullness effect and keep the surface unchanged, allowing to highlight the depth of shade and different natural nuances. Seta leather article has a thickness of 1.1 – 1.3 mm. The finish process enhances the look and warmth and gives this leather a pleasant touch.

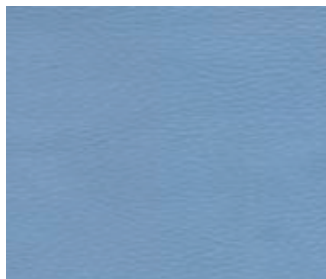
Specific Leather Care: Avoid direct sunlight. Avoid exposure to heat sources. Clean with a dry cloth, do not use of chemical cleaner.

CHARACTERISTICS

- Thickness: 1,3-1,5 mm
- Origin of raw material: European cowhide
- Dyeing: Through dyed
- Finishing: Aniline – Full grain – Aniline trough dyed

TECHNICAL DATA SHEET CAT 40 SETA

TEST	TEST METHOD	MINIMAL VALUE
Color fastness to rubbing -Dry	UNI EN ISO 11640	>= 50 Cycles >= 3 Grey Scale
Color fastness to rubbing -Wet	UNI EN ISO 11640	>= 20 Cycles >= 3 Grey Scale
Color fastness to rubbing – Alcaline Swet	UNI EN ISO 11640	>= 20 Cycles >= 3 Grey Scale
Colour fastness	UNI EN ISO 105 B02	>= 3 Blu Scale
Finish Adhesion	UNI EN ISO 11644	>= 2 N/cm
Tear Strenght	UNI EN ISO 3377-1	>= 20 N



DESCRIPTION

“Maya” the new that respects the “past”.

The leather represents the consolidated trend in fashion circles to combine the modern stylistic needs with the vintage style of aged, consumed...like an old and soft jeans to comfortably wear at any occasion.

The softness is obtained through the special retanning and drumming process that make the leather full-bodied and with a spready natural grain very pleasant to the look at. With a finishing based on waxes and anilines, applied on the grain and the further treatment of a light abrasion we are able to obtain that characteristic worn aspect and the pleasant sensation of velvety to the touch... , as a soft, old and warm clothing, perfectly fits to the shapes of your sofa .The final manufacturing step is a treatment named “Idra” that makes the article lightly protected on his grain surface.

Maya leather thanks to its softness, velvety hand and vintage look lends itself very well to both dress up any sofa model, from the classic lines to the modern designs, and the creation of accessories.

The range of colours has been carefully selected to combine the NEW AGE with many different styles and trying to satisfy and understand in the best possible way the taste of customers more and more selective.

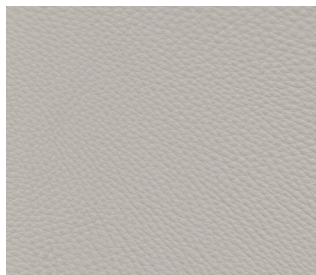
Avoid placing leather in direct sun and away from direct heat.

CHARACTERISTICS

- Thickness: 1.3/1.5mm
- Origin of raw material: Exotic selected cowhide
- Dyeing: Through dyed
- Finishing: Waxes and paraffins with nabuk effect

TECHNICAL DATA SHEET CAT 40 MAYA

TEST	TEST METHOD	MINIMAL VALUE
Colour fastness to rubbing dry	UNI EN ISO 11640	50 cycles > 3 Greyscale
Colour fastness to rubbing wet	UNI EN ISO 11640	20 cycles > 3 Greyscale
Colour fastness to rubbing with alkaline perspiration	UNI EN ISO 11640	20 cycles > 3 Greyscale
Light fastness	UNI EN ISO 105-B02	> 3 Bluescale
Tear strength	UNI EN ISO 3777-1	> 20 N
Ph determination	UNI EN ISO 4045	Ph > 3.5
Flexing endurance	UNI EN ISO 5402-1	20000 cycles no damage
Flammability	UNI EN ISO 1021-1 :2006 UNI EN ISO 1021-2 :2006	Misfire



DESCRIPTION

The Moss leather represents a new trend in the Furniture fashion. Balanced combination between modern stylistic needs and vintage style. The softness is obtained through the special retanning and drumming process that makes the leather full-bodied and with a light grain very pleasant to the look at. With a semi-aniline finishing applied on the small grain and the further treatment, we are able to obtain a musk look on the surface and a pleasant sensation of tactile velvet touch. The Moss leather, thanks to its softness and vintage look lends itself very well to dress up any sofa, ranging from classic to the modern designs. The range of colours has been carefully selected to combine the NEW AGE look and different styles to satisfy and meet the demands of our customers.

Please avoid placing leather in direct sun and keep away from direct heating sources.

The main characteristic of Leather Moss, is the possibility to clean it after accidental stains or spills with Ketchup, Maionnaise, Red Wine, Olive Oil, Coca Cola and etc.

LEATHER MOSS CLEANING INSTRUCTION

EQUIPMENT

White absorbent paper

White dry cotton cloth

PROCEDURE

After the exposure or contact, with liquid contaminants such as coffee and red wine, dry the excess liquid with a dry White absorbent cloth until no contaminant transfer is noticed from the surface of the White absorbent paper (change paper if necessary);

Take a white dry cotton cloth with very little water, then rub with circular movements with the use of the white cotton cloth to remove all dirt. Take one more with the dry cotton cloth and rub the surface gently until total absorbment of the wet.

CHARACTERISTICS

- Thickness: 1.1/1.3mm • Origin of raw material: Exotic selected cowhide
- Dyeing: Through dyed • Finishing: Retouched pre-printed grain

TECHNICAL DATA SHEET CAT 40 MOSS

Color Fastness to Light	EN ISO 105-B02	Min 4 blue scale		
Color Fastness to Rub	EN ISO 11640	Dry	500 cycles	4 Gray Scale
	EN ISO 11640	Wet	80 cycles	3/4 Gray Scale
	EN ISO 11640	Perspiration	50 cycles	4 Gray Scale
Finishing Adhesion	EN ISO 11644	> 2N/10 mm		
Flexing Endurance	EN ISO 5402	50.000 cycles (no finishing damage cracks)		
pH	EN ISO 4045	Min 3,2		



DESCRIPTION

Vintage Leather: A Harmonious Blend of Modern and Classic

This new trend in furniture fashion strikes a perfect balance between contemporary design needs and a timeless vintage aesthetic. Its key features include:

Exceptional Softness: Achieved through a specialized retanning and drumming process, resulting in a full-bodied leather.

Pleasing Aesthetics: A light, very pleasant grain contributes to its visual appeal.

Unique Finish: A semi-aniline finishing applied to the small grain, followed by further treatment, creates a distinctive “musk look” on the surface.

Luxurious Tactile Experience: The treatment also imparts a pleasant “tactile velvet touch,” enhancing its comfort and appeal.

Vintage Leather: Versatile and Stylish for Any Sofa

Vintage leather, with its inherent softness and vintage appearance, is highly versatile and well-suited for a wide range of sofa designs, from classic to modern.

Adaptable Design: Its characteristics make it ideal for dressing up diverse sofa styles.

Curated Color Palette: The range of available colors has been carefully chosen to complement the “NEW AGE” look and various design styles, aiming to satisfy diverse customer demands.

Care Instructions for Longevity:

To maintain the quality and appearance of both Vintage and Moss leather, it is important to:

Avoid Direct Sunlight: Prolonged exposure to direct sun can cause fading and damage.

Keep Away from Direct Heating Sources: Direct heat can dry out and crack the leather.

The main characteristic of Leather Vintage, is the possibility to clean it after accidental stains or spills with Ketchup, Maionnaise, Red Wine, Olive Oil, Coca Cola and etc.

CAT.40 LEATHER VINTAGE



LEATHER VINTAGE CLEANING INSTRUCTION

EQUIPMENT

White absorbent paper

White dry cotton cloth

PROCEDURE

After the exposure or contact, with liquid contaminants such as coffee and red wine, dry the excess liquid with a dry White absorbent cloth until no contaminant transfer is noticed from the surface of the White absorbent paper (change paper if necessary);

Take a white dry cotton cloth with very little water, then rub with circular movements with the use of the white cotton cloth to remove all dirt. Take one more with the dry cotton cloth and rub the surface gently until total absorbment of the wet.

CHARACTERISTICS

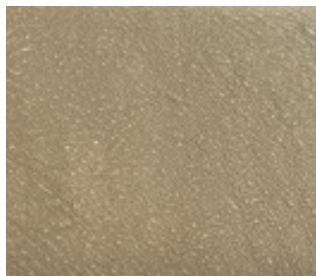
- Thickness: 1.1/1.3mm • Origin of raw material: Exotic selected cowhide
- Dyeing: Through dyed • Finishing: Retouched pre-printed grain

TECHNICAL DATA SHEET CAT 40 VINTAGE

Cow leather chrome tanned and aniline drum dyed. Buffed leather and natural grain, slightly bicolour, having high performance's nubuk effect

Thickness 1,2 - 1,4 mm. Average size around 4,8-5,2m²

Test	Method	Measurement Unit	Value
Colour fastness to rubbing - Dry	UNI EN ISO 11640	Scala dei grigi	≥ 2 200 cicli ≥ 4 G.S.
Colour fastness to rubbing - Wet	UNI EN ISO 11640	Scala dei grigi	≥ 80 cicli ≥ 4 G.S.
Colour fastness to rubbing - Alcalin Sweat	UNI EN ISO 11640	Scala dei grigi	≥ 50 cicli ≥ 4 G.S.
Colour fastness	UNI EN ISO 105 B02	Scala dei blu	≥ 4 B.S.
Finish adhesion	UNI EN ISO 1161	N/cm	≥ 2
Tear Strength	UNI EN ISO 3377-1	N	≥ 20
Flexing endurance	UNI EN ISO 5402		≥ 20000 cicli
G.S. Grey scale	G.S. Grey scale		



DESCRIPTION

Cashmere it's a Nabuk leather. It's a full aniline grain that is perfect for refined taste to dress living rooms. Raw hides carefully selected from European hides, a full grain of excellent quality, tanned in drums by aniline dyes, in a Chrome triplex Iroko wooden drums. The delicate finishing based on aniline with "natural" pigments allows the leather to have that transparency and that particular shade of colour that is so difficult to imitate on other items. Beside the furnishing, the Leather "Cashmere" perfectly fits with the wide world of leather goods (handbags, luggage, accessories). The range of colours for the Cashmere was the result of careful research among the most refined environment in the fashion's world where, in particular about colours, we can anticipate future trends while keeping constantly a taste for classic colours.

Avoid placing leather in direct sun and away from direct heat.

LEATHER MOSS CLEANING INSTRUCTION

EQUIPMENT

White absorbent paper

White dry cotton cloth

PROCEDURE

After the exposure or contact, with liquid contaminants such as coffee and red wine, dry the excess liquid with a dry White absorbent cloth until no contaminant transfer is noticed from the surface of the White absorbent paper (change paper if necessary);

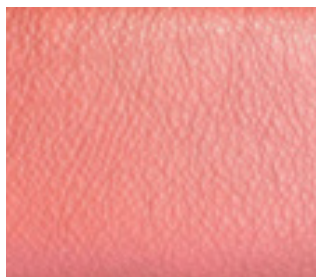
Take a white dry cotton cloth with very little water, then rub with circular movements with the use of the white cotton cloth to remove all dirt. Take one more with the dry cotton cloth and rub the surface gently until total absorbment of the wet.

CHARACTERISTICS

- Thickness: 1.1/1.3mm • Origin of raw material: Exotic selected cowhide
- Dyeing: Through dyed • Finishing: Retouched pre-printed grain

TECHNICAL DATA SHEET CAT 45 CASHMERE

Color Fastness to Light	UNI EN ISO 11640	Min 3 Greyscale		
Color Fastness to Rub	EN ISO 11640	Dry	50 cycles	3 Gray Scale
	EN ISO 11640	Wet	20 cycles	3 Gray Scale
	EN ISO 11640	Perspiration	20 cycles	3 Gray Scale
Finishing Adhesion	UNI EN ISO 3777-1	> 20N		
Flexing Endurance	UNI EN ISO 5402-1	20000 Cycles no damage		
pH	EN ISO 4045	Min 3,5		



DESCRIPTION

Oxford is a furniture leather produced on selected european hides, where quality of grain is carefully evaluated.

The hides are processed with a tradition beamhouse process of liming and tanning, with long time in wooden drum to ensure a better quality of the grain. Oxford is a pure drum dyed aniline leather, without correction of finishing layers but only applying a particular mix of oil and waxes which give transparency and depth to the leather.

The hides are toggle dried , which gives a very soft hand and a surface which has a small grain design, combined than with a special retanning process which enhances the natural beauty of this aniline leather.

Growth marks, healed scars and all natural factors that have influenced the hide are part of the look of the finished leather . Color variation within the hide or from hide to hide are part of the natural soul of this item.

To clean this leather we suggest the use of specific cleaning kits for aniline upholstery leather available in the market. The leather is sensible to heating sources and direct light, which may cause fading of the color and we strongly suggest to avoid as much as possible to have the finished product too close to these factors.

LEATHER MOSS CLEANING INSTRUCTION

EQUIPMENT

White absorbent paper

White dry cotton cloth

PROCEDURE

After the exposure or contact, with liquid contaminants such as coffee and red wine, dry the excess liquid with a dry White absorbent cloth until no contaminant transfer is noticed from the surface of the White absorbent paper (change paper if necessary);

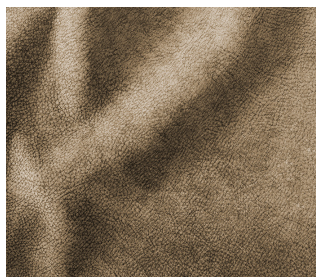
Take a white dry cotton cloth with very lillte water, then rub with circular moviments with the use of the white cotton cloth to remove all dirt. Take one more withe dry cotton cloth and rub the surface gently until total absorbiment of the wet.

CHARACTERISTICS

- Thickness: 1.1/1.3mm
- Origin of raw material: Exotic selected cowhide
- Dyeing: Through dyed
- Finishing: Retouched pre-printed grain

TECHNICAL DATA SHEET CAT 45 OXFORD

Color Fastness to Light	ISO 105-802	Min 2 blue scale		
Color Fastness to Rub	EN ISO 11640	Dry	50 cycles	2 Gray Scale
	EN ISO 11640	Wet	20 cycles	2 Gray Scale
	EN ISO 11641	Perspiration	20 cycles	2 Gray Scale
Finishing Adhesion	EN ISO 11644	> N/10 mm		
Flexing Endurance	EN ISO 5402	50.000 cycles (no finishing damage cracks)		
pH	EN ISO 4045	Min 3,2		



DESCRIPTION

BELLA VITA a wonderfully fluffy nubuck leather with an impressive appearance. BELLA VITA is a perfect example of pairing traditions with the latest techniques: this leather is lightly though-dyed, then pre-dried, given a dark top-dye, dried again, then sanded vigorously, leaving patches of grain here and there. This gives the leather its gorgeous, inimitable look. BELLA VITA looks like tree bark, and is a real eye-catcher. Chairs, benches, sofas, they all look fantastically unique! BELLA VITA - made for specialists by specialists. BELLA VITA requires an accommodating attitude to variations in colour!

Care products: Aniline Protector

CLEANING AND CARE INSTRUCTION

The article AMLETO is a high-quality aniline leather. Due to the open pores, these leathers are pleasantly warm, but also a little more sensitive to stains. For everyday cleaning, it is sufficient to occasionally dust off the leather with a feather duster or a dry dust cloth. Stains and visible dirt can be cleaned with a damp terry cloth and Leather Cleaner Mild. Not too wet to avoid water marks. Always practice a cleaning test in a hidden area! Be especially careful with lighter leather. For difficult stains, it is always better to contact a specialist first. Damage can easily occur due to improper cleaning attempts. For maintenance, we recommend Leather Protector. It's a protective cream with the necessary moisturizing oils and UV protection. It protects the leather from fading and keeps it soft. Depending on the strain, heat, and light intensity, the leather should be sparingly maintained every three to twelve months.



DESCRIPTION

NABUCK is a top class nubuck leather – nature at its purest! Soft and supple on the surface thanks to special buffing techniques. Manufactured with the best dyes and fat-liquoring agents to achieve the highest possible light fastness. First, NABUCK is gently embossed and finally milled for a long period. This gives the leather its distinctively coarse grain pattern.

NABUCK is made exclusively from heavy first-class bull hides. Each of them proudly displays its natural features such as scarring, variance in texture or fat wrinkles, enhancing the character of this article: natural, honest, and imposing.

Thickness: 3.0+ mm

Care products: Anilin Protector, Water Repellent Spray

CLEANING AND CARE INSTRUCTION

Nubuck leather is sanded on the surface. Therefore, nubuck is warm and open pored. For everyday cleaning, it is sufficient to occasionally dust off the leather with a feather duster or a dry dust cloth. In the case of fresh stains, first soak with a terry cloth or paper towel by pressing between the fingers. Do not rub! This can change the surface irreversibly. Remaining spots can be cleaned with a damp terry cloth. Not too wet to avoid borders and do not rub too hard. Dry the darkened, wet area with a hair dryer with cold air to avoid water marks. Then sand remaining darkened areas with the Sanding Pad. This method is also used when greasy areas because of skin or hair contact are darkened. Always practice a cleaning test in a hidden area! For difficult stains, it is always better to contact a specialist first. Damage can easily occur due to improper cleaning attempts. For maintenance, we recommend Aniline Protector. The Aniline Protector provides the necessary moisturizing to keep the leather soft and prevents fading. In case of risk of stains caused by liquids, Water Repellent Spray is recommended. Depending on the strain, heat, and light intensity, the leather should be sparingly maintained every three to twelve months.

CAT.65 NABUCK





DESCRIPTION

AMLETO is an unusual, emotive, thick nubuck leather with a mystical aura. AMLETO is made exclusively from heavy Central European bull hides. It's characteristic tumbled grain pattern, which is then sanded by hand for a distinctive look. A gorgeous two-tone effect is achieved through a complex, multi-step dyeing technique (also known as the sandwich process) the sanding process. Each AMLETO hide is unique and handmade with love and great care! Natural features such as scarring or distinctive fat wrinkles are quite deliberate, as they make each AMLETO skin something very special!

Thickness: 2.8/3.0 mm

Care products: Aniline Protector, Leather Cleaner Mild

CLEANING AND CARE INSTRUCTION




The article AMLETO is a high-quality aniline leather. Due to the open pores, these leathers are pleasantly warm, but also a little more sensitive to stains. For everyday cleaning, it is sufficient to occasionally dust off the leather with a feather duster or a dry dust cloth. Stains and visible dirt can be cleaned with a damp terry cloth and Leather Cleaner Mild. Not too wet to avoid water marks. Always practice a cleaning test in a hidden area! Be especially careful with lighter leather. For difficult stains, it is always better to contact a specialist first. Damage can easily occur due to improper cleaning attempts. For maintenance, we recommend Leather Protector. It's a protective cream with the necessary moisturizing oils and UV protection. It protects the leather from fading and keeps it soft. Depending on the strain, heat, and light intensity, the leather should be sparingly maintained every three to twelve months.

CAT.65 AMLETO



SUGGESTIONS FOR USE AND MAINTENANCE



-  Avoid placing leather in direct sun
-  Keep the leather away from direct heat
-  Dust regularly with a soft and dry cloth

Please protect your leather sofas by avoiding exposure to direct sunlight or to power lamps as this will cause colour fading. Position your sofas at least 50 cm (20 inches) from sources of heat such as heaters and radiators.

HIGH AND MEDIUM PROTECTED LEATHERS (CAT 25,38,40)

Dust by using a clean dry white cloth and make sure it is soft and non-abrasive.

Vacuum cleaning in crevices and along bottom strictly when necessary by using power at medium, avoid rubbing the accessory directly against the leather.

Do not use saddle soap, cleaning solvents, furniture polish, abrasive cleaners, unapproved detergents substances. Stains caused by soft drinks, coffee, tea, milk jam, oil and cosmetics try to remove the stain very quickly by dabbing with an absorbent white cloth or paper towel. Then soak a white cloth in water and mild white soap solution and gently start rubbing from the outside of the stain to the centre. Do not soak the stain heavily in water and dry the surface immediately using a clean cloth. Do not dry the leather in direct sunlight or with a hair dryer as leathers need to dry naturally. If the stain persists, to avoid any potential damage to the leather, kindly contact a leather specialist.

LOW PROTECTED LEATHERS, GRADE 40, 45, 55, 65



Dust by using a clean dry white cloth and make sure it is soft and non-abrasive.

Vacuum cleaning in crevices and along bottom strictly when necessary by using power at medium, avoid rubbing the accessory directly against the leather

DO NOT USE any leather conditioner, saddle soap, cleaning solvents, furniture polish, abrasive cleaners, unapproved detergents. For stains like soft drinks, coffee, tea, milk and jam remove the stain very quick from the surface with paper towel or non-abrasive cloth. Then with a cloth just soaked in water, rub gently from the outside of the stain towards the centre. Then dry immediately with a clean dry cloth.



Rossini Srl
Via Enzo Ferrari snc - Z.I. La Martella
75100 Matera - ITALY
Tel: +39 0835 302872 - Tel./Fax +39 0835 302077
info@rossinisofas.it - www.rossinisofas.it